

## PE/Cy5 Anti-Mouse CD25 Monoclonal Antibody



天津三箭生物技术股份有限公司  
Tianjin Sungene Biotech Co., Ltd.  
精准 高效 稳定 Precision Efficient Stable

Catalog Number	Vial Size
M10251-35A	25 µg
M10251-35C	100 µg

**Market** | 400-621-0003  
marketing@sungenebiotech.com

**Support** | 022-66211636-8024  
techsupport@sungenebiotech.com

**Web** | www.sungenebiotech.com

**Important Note:** Centrifuge before opening to ensure complete recovery of vial contents.  
This product is guaranteed up to one year from purchase.

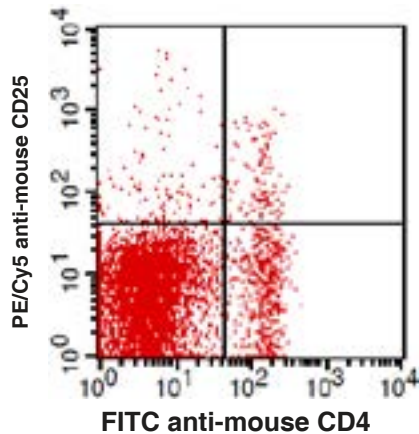
### Purified Antibody Characterization

Clone	Isotype	Reactivity
PC-61.5.3	Rat IgG1	Mouse

### Description

CD25 is a 55 kD glycoprotein also known as the low affinity IL-2R $\alpha$ , Ly-43, p55, or Tac. It is expressed on activated T and B cells, thymocyte subset, pre-B cells, and T regulatory cells. In association with CD122 (IL-2R $\beta$ ) and CD132 (common  $\gamma$  chain), CD25 forms the high affinity signaling IL-2 receptor.

### Illustration of Immunofluorescent Staining



C57BL/6 mouse splenocytes stained with FITC anti-mouse CD4 and PE/Cy5 anti-mouse CD25

### Product Information

**Conjugation:** PE/Cy5

**Formulation:** PBS pH 7.2, 0.09% NaN<sub>3</sub>, 0.2% BSA

**Concentration:** 0.2 mg/ml

**Storage:** Keep as concentrated solution. Store at 4°C and protected from prolonged exposure to light. **Do not freeze.**

**Application:** Recommended Application: FC

**Usage:** Each lot of this antibody is quality control tested by immunofluorescent staining with flow cytometric analysis (The amount of the reagent is suggested to be used  $\leq 0.25 \mu\text{g} / 10^6$  cells in 100  $\mu\text{l}$ ). Since applications vary, the appropriate dilutions must be determined for individual use.

### References

- [1] Taniguchi, T., et al. 1993. Cell 73:5.
- [2] Waldmann, T.A., 1991. J. Biol. Chem. 266:2681.
- [3] Read, S., et al. 2000. J. Exp. Med. 192:295.
- [4] Lowenthal, J.W., et al. 1985. J. Immunol. 135:3988.

**For Research Use Only.**